

25MHz to 150MHz 2 Channel Digital Storage Oscilloscopes



FEATURES

- Easy-to-read LCD (Color/Mono) Display
- Dual Channel, Bandwidth : 25MHz to 150MHz per channel
- Rise Time : 2.3nsec to 14nsec.
- Sample Rate (Real-time) 250MS/s
- Equivalent Sampling up to 50GS/s
- Advanced Triggering on edge, video, pulse
- 20 Automatic Measurements, Manual Cursor Measurement
- Sweep Time : 2.3nsec to 50s/div
- 10 Waveforms, 10 Setups Storage
- +, -, x, ÷, Mathematic Functions
- Zoom with Delay Scan
- Built-in FFT
- Built-in USB and RS232 Interface
- Automatic Calibration
- Exclusive Digital Filters, Waveform Recorder & Pass / Fail Features
- Frequency Counter
- Record Length 4K each channel
- USB Host to store waveform on USB drive

New Aplab Digital Storage Oscilloscopes Series D36000C/M is a high performance Desktop DSO with bandwidth from 25MHz to 150MHz and sampling rate of 250MS/s (equivalent samplings of 50GS/s). A VGA Color LCD (D36000C) and Mono LCD (D36000M) is used for bright and clear display of the waveforms. Storage is as simple as pressing a button. Trigger offset option allows to view pre/post trigger events. Cursor and automatic measurements greatly simplify the analysis of these events. Built-in USB and RS232 ports provided, upgrades this oscilloscope for communication with a PC or a remote controller. Internal Digital Filters at input facilitates rejection of noise in the signals. The built-in FFT maths function allows simultaneous viewing of waveforms in Time & Frequency domain. The Recorder utility helps to capture, replay and also to store the abnormal waveform and glitches. The feature Pass-Fail compares and detects the abnormal phenomena exceeding a predetermined limits. The Software provided facilitates the use of Data browser to display captured waveforms, data and measurements. You can export the waveform by "BMP Format" and also save the data into TXT or Excel file for analysis and to print using PC. USB Host provided on front panel facilitates to store the waveform in BMP format on Flash Drive.

Technical Specification

MODELS		D36150C / D36100C / D36060C	D36150M / D36100M / D36060M / D36040M / D36025M
Color / Mono		Color	Mono
Bandwidth		150MHz-D36150C, 100MHz-D36100C, 60MHz-D36060C	150MHz-D36150M, 100MHz-D36100M, 60MHz-D36060M, 40MHz-D36040M, 25MHz-D36025M
Sample Rate (Real-Time)		250MS/s	
Equivalent Sampling		50GSa/s	
Number of Channels		CH1, CH2 & Ext. Trigger	
Memory		4K per channel	
Vertical Sensitivity (/div)		2mV/div - 5V/div	
Vertical Accuracy		±3%	
Vertical Resolution		8 bits	
Rise Time		2.3ns-D36150C, 3.5ns-D36100C, 5.8ns-D36060C	2.3ns-D36150M, 3.5ns-D36100M, 5.8ns-D36060M, 8.8ns-D36040M, 14ns-D36025M
Input Impedance		50 ohms, 1Mohm approx. 19pF.	
Maximum Input Voltage		400V (DC + AC peak to peak).	
Input Coupling CH1 & CH2		DC, AC or GND	
Timebase Range (/div)		2ns/div-50s/div (D36150C/D36100C) 5ns/div-50s/div (D36060C)	2ns/div-50s/div (D36150M/D36100M) 5ns/div-50s/div (D36060M/D36040M) 20ns/div-50s/div (D36025M)
Horizontal Accuracy		100 ppm	
Trigger Source		CH1, CH2, ext, ext/5, AC line	
Trigger Mode		Auto, Normal, Single	
Trigger Coupling		DC, AC, LF Rej, HF Rej	
Trigger Type		Edge, TV, Pulse, Delay	
Maximum Input Voltage		400V (DC + AC peak)	
Auto Measure		V _{max} , V _{min} , V _{avg} , V _{rms} , V _{pp} , V _{pk} , V _{tr} , V _{trf} , Freq., Rise Time, Fall Time, Period, +Width, -Width, -Overshoot, +Overshoot, +duty, -duty, etc.	
Cursor Measure		Manual, Trace, Auto Measure	
Math		Add, subtract, multiply, divide & FFT	
FFT	Window	Hanning, Hamming, Blackman, Rectangular	
	Sample	1024 points	
Storage		10 Waveforms, 10 setups	
X-Y Operation	Bandwidth	150MHz-D36150C, 100MHz-D36100C, 60MHz-D36060C	150MHz-D36150M, 100MHz-D36100M, 60MHz-D36060M, 40MHz-D36040M, 25MHz-D36025M
	Phase Difference	±3 degree	
Probe Compensation Output		3V p-p, 1KHz	
Interface		USB, RS232, USB Host for Flash Drive	
Display		VGA color LCD, 320 x 240	Black & White LCD, 320 x 240
Power		Worldwide Use, 100-240V/35W max., 50VA max.	
Net Weight		4.5 Kg.	
Size (Excl. Handle)		300 mm x 145 mm x 312 mm	
Accessories		Probe x2 (10x), Power Cable, User Manual, Software CD, USB Device Cable	
Optional Accessories		RS232 Cable	
Environmental Requirements		Operating Temperature 10°C to 40°C ≤85% RH. Storage Temperature -20°C to 60°C.	



In-built storage container for storing manual & accessories.



Protection mask provided to protect the buttons, knobs and to avoid dust.



Rear View of DSO



USB Device Cable



Power Cable



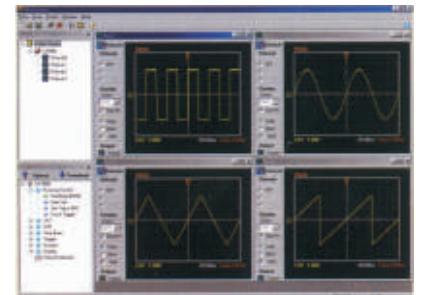
Software CD and User Manual.



Probe x 2 (10x)



RS232 Cable



ULTRASCOPE for D36000 Series DSO

Aplab

Test & Measurement Instruments Division

Aplab Limited, A-5, Wagle Estate, Thane 400 604. India. Tel. : 91-22-67395555, 25821861 Fax : 25823137 Email : tmsales@aplab.com

•AGRA •AHMEDABAD •BANGALORE •CHANDIGARH •CHENNAI •COIMBATORE •INDORE •JAIPUR •KOLKATA •LUCKNOW •MUMBAI •NEW DELHI •PUNE •SECUNDERABAD •THIRUVANANTHAPURAM

www.aplab.com