

40MHz to 200MHz 2 Channel Digital Storage Oscilloscopes



FEATURES

- Easy-to-read LCD (Color/Mono) Display
- Dual Channel, Bandwidth : 40MHz to 200MHz per channel
- Rise Time : 1.8nsec to 8.8nsec.
- Sample Rate (Real-time) 1GS/s
- Equivalent Sampling up to 50GS/s
- Advanced Triggering on edge, video, pulse
- 20 Automatic Measurements, Manual Cursor Measurement
- Sweep Time : 1nsec to 50s/div
- 10 Waveforms, 10 Setups Storage
- +, -, x, ÷, Mathematic Functions
- Zoom with Delay Scan
- Built-in FFT
- Built-in USB and RS232 Interface
- Automatic Calibration
- Exclusive Digital Filters, Waveform Recorder & Pass / Fail Features
- Frequency Counter
- Record Length 4K each channel
- USB Host to store waveform on USB drive

New Aplab Digital Storage Oscilloscopes Series D36000CA/MA is a high performance Desktop DSO with bandwidth from 40MHz to 200MHz and sampling rate of 1GS/s (equivalent samplings of 50GS/s). A VGA Color LCD (D36000CA) and Mono LCD (D36000MA) is used for bright and clear display of the waveforms. Storage is as simple as pressing a button. Trigger offset option allows to view pre/post trigger events. Cursor and automatic measurements greatly simplify the analysis of these events. Built-in USB and RS232 ports provided, upgrades this oscilloscope for communication with a PC or a remote controller. Internal Digital Filters at input facilitates rejection of noise in the signals. The built-in FFT maths function allows simultaneous viewing of waveforms in Time & Frequency domain. The Recorder utility helps to capture, replay and also to store the abnormal waveform and glitches. The feature Pass-Fail compares and detects the abnormal phenomena exceeding a predetermined limits. The Software provided facilitates the use of Data browser to display captured waveforms, data and measurements. You can export the waveform by "BMP Format" and also save the data into TXT or Excel file for analysis and to print using PC. USB Host provided on front panel facilitates to store the waveform in BMP format on Flash Drive.

Technical Specification

MODELS	D36200CA / D36150CA / D36100CA / D36060CA		D36150MA / D36100MA / D36060MA / D36040MA	
Color / Mono	Color		Mono	
Bandwidth	200MHz-D36200CA, 150MHz-D36150CA, 100MHz-D36100CA, 60MHz-D36060CA		150MHz-D36150MA, 100MHz-D36100MA, 60MHz-D36060MA, 40MHz-D36040MA	
Sample Rate (Real-Time)	1GS/s			
Equivalent Sampling	50GSa/s			
Number of Channels	CH1, CH2 & Ext. Trigger			
Memory	4K per channel			
Vertical Sensitivity (/div)	2mV/div - 5V/div			
Vertical Accuracy	±3%			
Vertical Resolution	8 bits			
Rise Time	1.8ns-D36200CA, 2.3ns-D36150CA, 3.5ns-D36100CA, 5.8ns-D36060CA		2.3ns-D36150MA, 3.5ns-D36100MA, 5.8ns-D36060MA, 8.8ns-D36040MA	
Input Impedance	50 ohms, 1Mohm approx. 19pF.			
Maximum Input Voltage	400V (DC + AC peak to peak).			
Input Coupling CH1 & CH2	DC, AC or GND			
Timebase Range (/div)	1ns/div-50s/div (D36200CA) 2ns/div-50s/div (D36150CA/D36100CA) 5ns/div-50s/div (D36060CA)		2ns/div-50s/div (D36150MA/D36100MA) 5ns/div-50s/div (D36060MA/D36040MA)	
Horizontal Accuracy	100 ppm, 50 ppm (D36200CA only)			
Trigger Source	CH1, CH2, ext, ext/5, AC line			
Trigger Mode	Auto, Normal, Single			
Trigger Coupling	DC, AC, LF Rej, HF Rej			
Trigger Type	Edge, TV, Pulse, Delay			
Maximum Input Voltage	400V (DC + AC peak)			
Auto Measure	V _{pk} , V _{pp} , V _{max} , V _{min} , V _{avg} , V _{rms} , V _{tr} , V _{trf} , Freq., Rise Time, Fall Time, Period, +Width, -Width, -Overshoot, +Overshoot, +duty, -duty, etc.			
Cursor Measure	Manual, Trace, Auto Measure			
Math	Add, subtract, multiply, divide & FFT			
FFT	Window	Hanning, Hamming, Blackman, Rectangular		
	Sample	1024 points		
Storage	10 Waveforms, 10 setups			
X-Y Operation	Bandwidth	200MHz-D36200CA, 150MHz-D36150CA, 100MHz-D36100CA, 60MHz-D36060CA		150MHz-D36150MA, 100MHz-D36100MA, 60MHz-D36060MA, 40MHz-D36040MA
	Phase Difference	±3 degree		
Probe Compensation Output	3V p-p, 1KHz			
Interface	USB, RS232, USB Host for Flash Drive			
Display	VGA color LCD, 320 x 240		Black & White LCD, 320 x 240	
Power	Worldwide Use, 100-240V/35W max., 50VA max.			
Net Weight	4.5 Kg.			
Size (Excl. Handle)	300 mm x 145 mm x 312 mm			
Accessories	Probe x2 (10x), Power Cable, User Manual, Software CD, USB Device Cable			
Optional Accessories	RS232 Cable			
Environmental Requirements	Operating Temperature 10°C to 40°C ≤85% RH. Storage Temperature -20°C to 60°C.			



In-built storage container for storing manual & accessories.



Protection mask provided to protect the buttons, knobs and to avoid dust.



Rear View of DSO



USB Device Cable



Power Cable



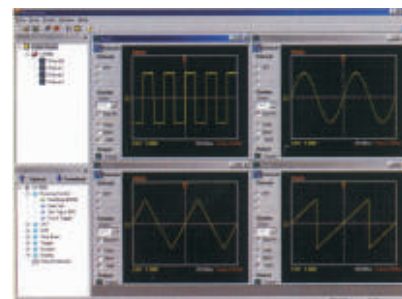
Software CD and User Manual.



Probe x 2 (10x)



RS232 Cable



ULTRASCOPE for D36000 Series DSO

Aplab Test & Measurement Instruments Division

Aplab Limited, A-5, Wagle Estate, Thane 400 604. India. Tel. : 91-22-67395555, 25821861 Fax : 25823137 Email : tmsales@aplab.com

•AGRA •AHMEDABAD •BANGALORE •CHANDIGARH •CHENNAI •COIMBATORE •INDORE •JAIPUR •KOLKATA •LUCKNOW •MUMBAI •NEW DELHI •PUNE •SECUNDERABAD •THIRUVANANTHAPURAM